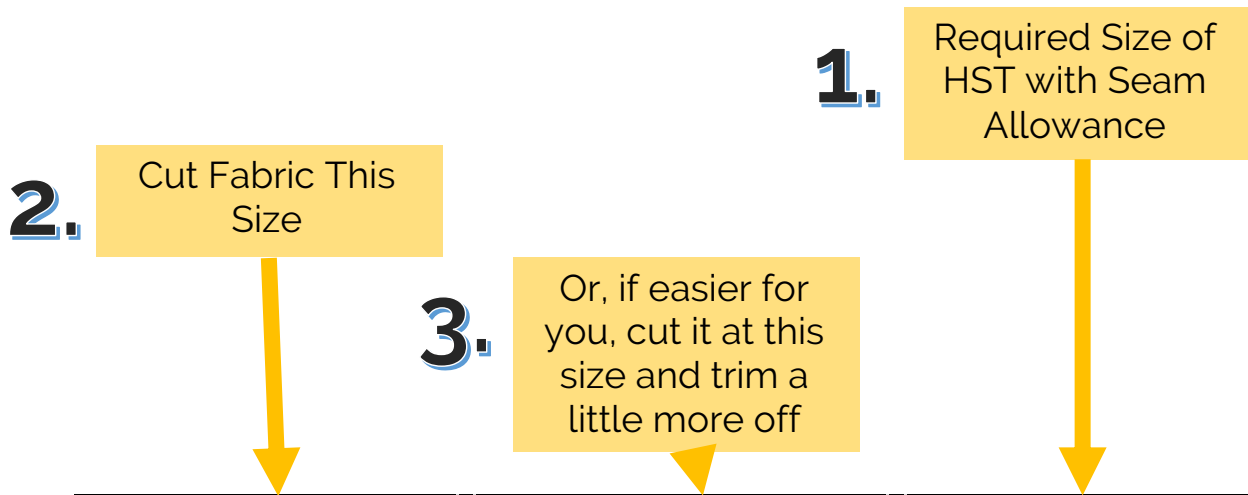


Half Square Triangle Cutting Chart



Half Square Triangle Cutting Chart		
Initial Square Size	Rounded Up Initial Square Size	Size of Final Trimmed HST
2 3/8"	2 1/2"	1 1/2"
2 7/8"	3"	2"
3 3/8"	3 1/2"	2 1/2"
3 7/8"	4"	3"
4 3/8"	4 1/2"	3 1/2"
4 7/8"	5"	4"
5 3/8"	5 1/2"	4 1/2"
5 7/8"	6"	5"
6 3/8"	6 1/2"	5 1/2"
6 7/8"	7"	6"
7 3/8"	7 1/2"	6 1/2"
7 7/8"	8"	7"
8 3/8"	8 1/2"	7 1/2"
8 7/8"	9"	8"
9 3/8"	9 1/2"	8 1/2"
9 7/8"	10"	9"
10 3/8"	10 1/2"	9 1/2"
10 7/8"	11"	10"